



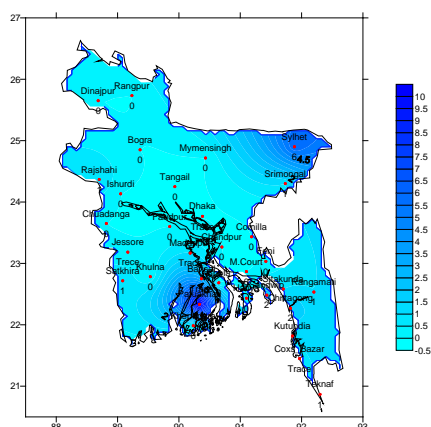
Government of the People's Republic of Bangladesh  
Bangladesh Meteorological Department  
(Agro-meteorology Division)  
Meteorological Complex, Agargaon, Dhaka-1207.

Agm-3 (2)/2015/46

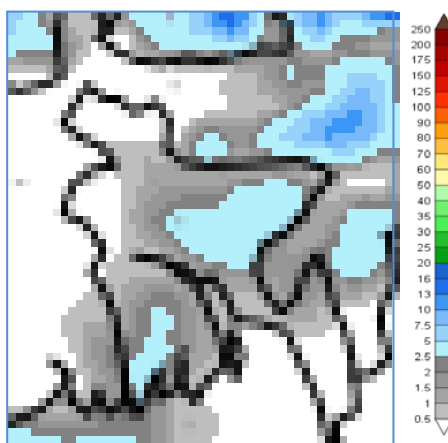
Issue date: 08-12-2015

**Forecast for the period: 08.12.2015 to 14.12.2015**

Spatial distribution of Rainfall  
(Period: 01-12-2015 to 07-12-2015)



Accumulative Rainfall forecast  
(Period: 08-12-2015 to 14-12-2015)



Extended Outlook for accumulative rain  
(Period: 15-12-2015 to 21-12-2015)



**Highlights:**

Country average of bright sunshine hour was 2.85 hours per day during last week.

Country average of free water loss during the previous week was averaged 2.45 mm per day.

**Weather Forecast and Advisory for the Period of 08.12.2015 to 14.12.2015.**

Bright sunshine hour is expected to be between 4.00 to 5.00 hours per day during this week.

Average of free water loss during the next week is expected to be between 2.0 mm to 3.0 mm per day.

- Seasonal low lies over South Bay, extending its trough to North Bay.
- Weather may remain mainly dry with temporary partly cloudy sky.
- Light to moderate fog may occur over the country and moderate to heavy fog may occur at places over the river basins during mid night till morning
- Slight fall in maximum and slight rise in minimum temperature are expected over the country during this period.

(Mahnaz Khan)

Deputy Director

For Director

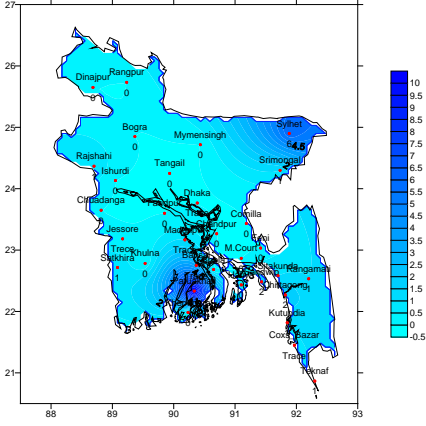
Phone: 8130305(Office)

N.B-Visit BMD Website – [www.bmd.gov.bd](http://www.bmd.gov.bd) for colored digital map of weekly rainfall forecast.

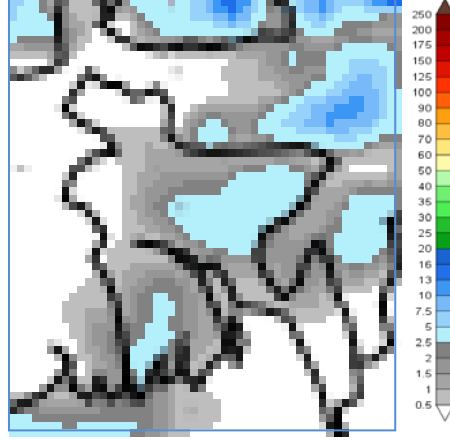
## Bengali Version

পূর্বাভাস, সময়: ০৮-১২-২০১৫ থেকে ১৪-১২-২০১৫

Spatial distribution of Rainfall  
(Period: 01-12-2015 to 07-12-2015)



Accumulative Rainfall forecast  
(Period: 08-12-2015 to 14-12-2015)



Extended Outlook for accumulative rain  
(Period: 15-12-2015 to 21-12-2015)



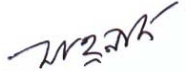
### প্রধান বৈশিষ্ট্য সমূহঃ-

গত সপ্তাহে দেশের দৈনিক উজ্জ্বল সূর্যকিরণ কালের গড় ২.৮৫ ঘন্টা ছিল ।  
গত সপ্তাহে দেশের দৈনিক বাষ্পীভবনের গড় ২.৪৫ মিঃ মিঃ ছিল ।

### আবহাওয়ার পূর্বাভাসঃ- ০৮-১২-২০১৫ থেকে ১৪-১২-২০১৫ ইং পর্যন্ত ।

এ সপ্তাহে দৈনিক উজ্জ্বল সূর্য কিরণ কাল থেকে ঘন্টার মধ্যে থাকতে পারে ।  
আগামী সপ্তাহের বাষ্পীভবনের দৈনিক গড় মান মিঃ মিঃ থেকে মিঃমিঃ থাকতে পারে ।

- স্বাভাবিক লঘুচাপ দক্ষিণ বঙ্গোপসাগরে অবস্থান করছে । যার বর্ধিতাংশ উত্তর বঙ্গোপসাগর পর্যন্ত বিস্তৃত ।
- এ সময়ে সারাদেশের আকাশ অস্থায়ীভাবে আংশিক মেঘলাসহ আবহাওয়া প্রধানতঃ শুষ্ক থাকতে পারে ।
- এ সময়ে মধ্যরাত থেকে সকাল পর্যন্ত সারাদেশে হালকা থেকে মাঝারী এবং নদী অববাহিকার কোথাও কোথাও মাঝারী থেকে ঘন কুয়াশা পড়তে পারে ।
- এ সময়ে সারাদেশের সর্বোচ্চ তাপমাত্রা সামান্য হ্রাস ও সর্বনিম্ন তাপমাত্রা সামান্য বৃদ্ধি পেতে পারে ।

  
(মাহনাজ খান)  
উপ-পরিচালক  
পরিচালকের পক্ষে  
ফোনঃ ৮১৩০৩০৫ (দপ্তর)

বিঃ দ্রঃ- পূর্বাভাসের ডিজিটাল map দেখতে visit করুন- [www.bmd.gov.bd](http://www.bmd.gov.bd)

**Short Weather Description, Period: 01.12.2015 to 07.12.2015**

Light rain was recorded at many places over the country during this period.

Highest maximum temperature was recorded in Dhaka Division 25.3-30.6°C, Chittagong Division 24.0-30.3°C, Sylhet Division 25.5-29.4°C, Rajshahi Division 25.6-30.3°C, Rangpur Division 23.2-29.0°C, Khulna Division 26.6-31.2°C and Barisal Division 26.2-30.6°C.

Extreme maximum temperature was recorded at Faridpur in Dhaka Division 30.6°C, at Teknaf in Chittagong Division 30.3°C, at Srimongal in Sylhet Division 29.4°C, at Bogra in Rajshahi Division 30.3°C, at Rangpur in Rangpur Division 29.0°C, at Jessore in Khulna Division 31.2°C and at Khepupara in Barisal Division 30.6°C.

Lowest minimum temperature was recorded in Dhaka Division 15.1-21.5°C, Chittagong Division 14.5-22.8°C, Sylhet Division 12.6-18.6°C, Rajshahi Division 16.2-19.6°C, Rangpur Division 14.0-19.0°C, Khulna Division 17.4-23.4°C and Barisal Division 16.7-22.2°C.

Extreme minimum temperature was recorded at Mymensingh in Dhaka Division 15.1°C, at Rangamati in Chittagong Division 14.5°C, at Srimongal in Sylhet Division 12.6°C, at Rajshahi in Rajshahi Division 16.2°C, at Dinajpur in Rangpur Division 14.0°C, at Jessore & Chuadanga in Khulna Division 17.4°C and at Khepupara & Bhola in Barisal Division 16.7°C.

**Rainfall analysis and average temperature: -**

Name of the Divisions	Name of the Stations	Total Rainfall In (mm)	Normal Rainfall In (mm)	Deviation in %	Total Rainy days	Average Max Humidity in %	Average Min Humidity in %	Average Max. temp In °C	Average Normal Max. temp In °C	Average Min. temp In °C	Average Normal Min. temp In °C
Dhaka	Dhaka	Trace	1	***	01	092	049	28.2	27.7	19.9	15.9
	Mymensingh	00	0	***	00	098	058	27.5	27.6	017	14.7
	Faridpur	00	1	-100	00	097	057	28.5	27.1	19.7	15.6
	Madaripur	Trace	0	***	01	**	**	**	27.6	**	15.2
	Tangail	00	2	-100	00	096	054	27.7	27.3	18.0	14.7
Chittagong	Chittagong	02	1	100	03	**	**	27.8	28.1	19.9	17.1
	Sitakunda	01	1	0	01	**	**	**	28.6	**	15.1
	Rangamati	01	3	-67	01	**	**	**	27.4	**	16.5
	Cox's Bazar	Trace	3	***	02	095	055	28.3	28.8	20.0	17.7
	Teknaf	01	3	-67	01	**	**	**	28.9	**	18.1
	Hatiya	00	2	-100	01	100	066	28.2	27.0	19.7	16.8
	Sandwip	02	1	100	01	098	063	27.7	27.2	19.3	17.0
	Kutubdia	01	2	-50	01	093	060	27.8	28.0	19.7	17.6
	Feni	00	1	-100	00	097	059	28.0	27.8	18.4	15.4
	M.Court	00	1	-100	00	098	061	27.0	27.2	20.5	16.9
	Chandpur	00	0	***	00	095	062	28.6	27.1	19.4	16.3
	Comilla	00	1	-100	00	095	055	28.7	27.7	20.3	14.4
Sylhet	Sylhet	06	2	200	01	093	053	28.0	27.6	17.3	15.5
	Srimongal	01	1	0	01	**	**	**	27.7	**	13.0
Rajshahi	Rajshahi	01	1	0	02	099	053	28.3	27.1	17.7	13.9
	Bogra	00	0	***	00	096	050	28.3	28.1	18.2	14.9
	Isurdi	00	0	***	00	100	043	28.6	27.3	018	13.6
Rangpur	Rangpur	00	2	-100	00	096	058	26.8	26.4	17.2	14.1
	Dinajpur	00	0	***	00	098	049	26.8	26.9	016	13.2
Khulna	Khulna	00	1	-100	00	099	064	28.7	27.6	21.3	15.2
	Jessore	Trace	1	***	00	097	050	29.6	28.1	18.7	13.9
	Chuadanga	00	0	***	00	097	055	28.6	27.6	18.9	13.8
	Satkhira	01	0	***	01	098	040	28.7	28.0	020	14.5
Barisal	Barisal	Trace	1	***	01	100	064	28.0	27.8	20.0	14.9
	Bhola	00	0	***	00	**	**	**	27.8	**	15.4
	Patuakhali	11	2	450	02	099	064	24.9	27.7	19.9	16.5
	Khepupara	00	0	***	00	**	**	**	27.7	**	16.3

N.B. Analyses contained in this bulletin are based on preliminary un-checked data. \*\* Data not received. \*\*\* Data not available.